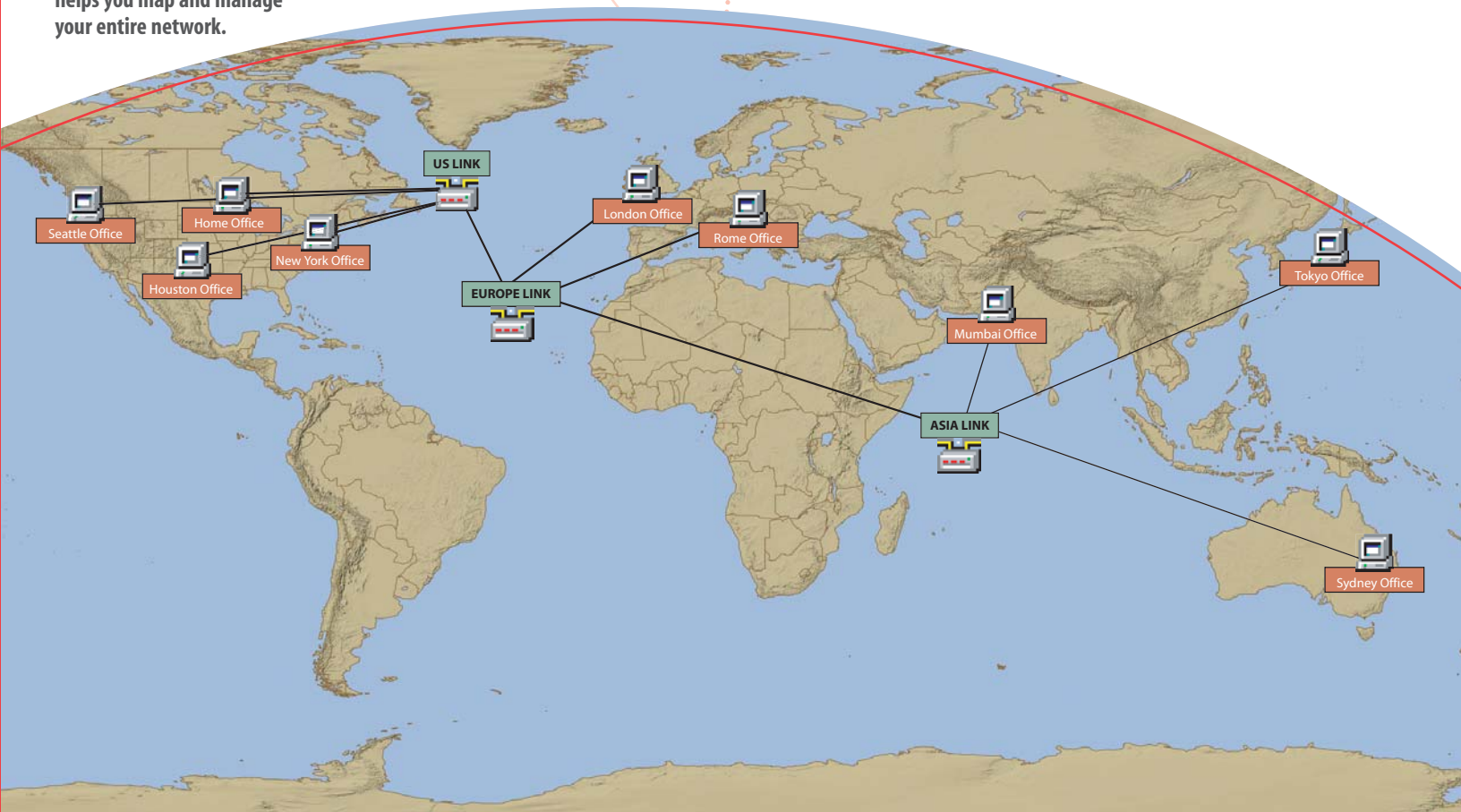




## A High-Level Monitoring Device For Your Entire Network (LAN, 802.11a/b/g, Gigabit, WAN)

- Network Mapping
- Active Notification System
- Historical Analysis
- Route Mapping
- Quality of Service Management
- Web Reporting

Whether your network spans multiple rooms or multiple continents, Link Analyst helps you map and manage your entire network.



## Link Analyst is a powerful, intuitive solution for managing critical networks and the routes that connect them

- Reduce troubleshooting time
- Detect network abnormalities and device/route failures
- Configure alarms for **instant alerts** via program, pager, SNMP trap or email
- Create maps quickly of even the largest networks – locally or remotely
- Log response times and create a **historical baseline**
- View historical data and current map status from **any Web browser**
- Organize network displays for **quick and easy viewing**
- **Integrate** with other diagnostic/troubleshooting solutions including the Observer® family of network analyzers

This cost-effective, software-based Windows solution is easy to install and use. You'll quickly realize the time and cost savings in identifying network trouble spots before they turn into network disasters.

## Verify Quality of Service and Service Level Agreements

With Link Analyst you can monitor the severity of degradation and spot trends that may indicate an impending failure.

- Review QoS levels end-to-end and between network elements
- Audit network performance to ensure existing SLAs are in compliance
- Configure service level tracking for any device
- Quickly identify lapses in 3rd party agreements

## Create a Complete Network Map in Minutes

Right away, Link Analyst helps you generate a map of any segment or group of systems on your network. Review your current network assets with a visual grade of current response times. "Drill-down" functionality is available for individual station statistics. Tabs for map-specific details show device addresses, protocols (IP, DNS, IPX, NetBIOS), response time histories and configuration status.

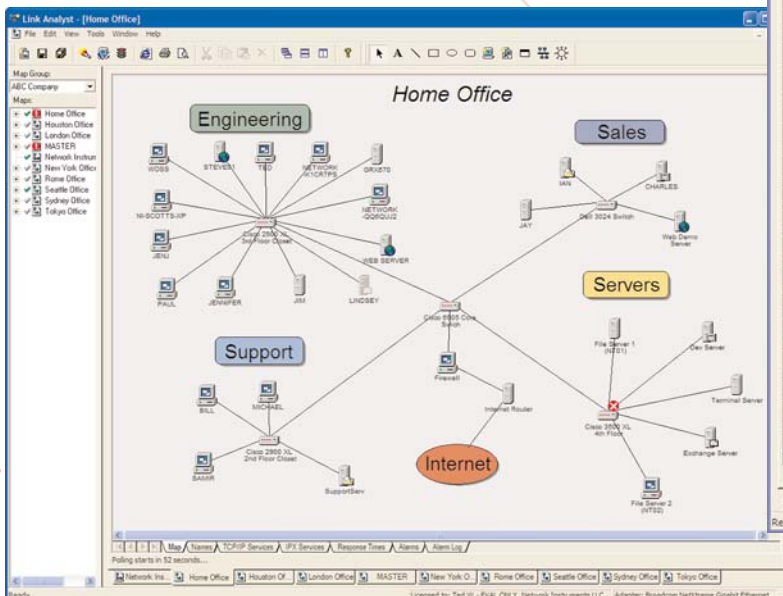
## Obtain Point-to-Point Route Analysis with Route Mapping

Link Analyst is the only product in its class to offer a unique and complete Route Mapping utility.

- Obtain both a graphical and table-based display of a route between the Link Analyst system and any device reachable via IP including response time between hops
- Monitor the performance of the connection between two devices
- Create an independent QoS log for WAN vendor uptime, as well as response time SLA verification

## Map Local and Remote Networks of Any Size with Network Mapping

- Obtain both a graphical and table-based display of a network, network segment, or even an entire WAN
- Monitor response time and performance of devices anywhere on the network within a matter of minutes
- Organize network maps by department, function or location for quick and easy reference
- Double-click within network maps for easy sub-level analysis
- Customize map views with various layouts (bus, ring, group or free-form)



| Name                              | DNS | FTP | HTTP | LPD | NNTP | POP3 | SMTP | SNMP | TELNET |
|-----------------------------------|-----|-----|------|-----|------|------|------|------|--------|
| 1 BILL                            |     |     |      |     |      |      |      |      |        |
| 2 Cisco 2900 XL 2nd Floor Closet  |     |     |      |     |      |      |      |      |        |
| 3 MICHAEL                         |     |     |      |     |      |      |      |      |        |
| 4 SAMIR                           |     |     |      |     |      |      |      |      |        |
| 5 Cisco 6505 Core Switch          |     |     |      |     |      |      |      |      |        |
| 6 Internet Router                 |     |     |      |     |      |      |      |      |        |
| 7 SupportServ                     |     |     |      |     |      |      |      |      |        |
| 8 JAN                             |     |     |      |     |      |      |      |      |        |
| 9 JAY                             |     |     |      |     |      |      |      |      |        |
| 10 CHARLES                        |     |     |      |     |      |      |      |      |        |
| 11 Dell 3024 Switch               |     |     |      |     |      |      |      |      |        |
| 12 Dev Server                     |     |     |      |     |      |      |      |      |        |
| 13 Web Demo Server                |     |     |      |     |      |      |      |      |        |
| 14 Cisco 2900 XL 3rd Floor Closet |     |     |      |     |      |      |      |      |        |
| 15 STEVE01                        |     |     |      |     |      |      |      |      |        |
| 16 Exchange Server                |     |     |      |     |      |      |      |      |        |
| 17 Firewall                       |     |     |      |     |      |      |      |      |        |
| 18 WOSS                           |     |     |      |     |      |      |      |      |        |
| 19 WEB SERVER                     |     |     |      |     |      |      |      |      |        |
| 20 Terminal Server                |     |     |      |     |      |      |      |      |        |
| 21 LINDSEY                        |     |     |      |     |      |      |      |      |        |
| 22 NETWORK-K1CR7PS                |     |     |      |     |      |      |      |      |        |
| 23 File Server 2 (NT02)           |     |     |      |     |      |      |      |      |        |
| 24 File Server 1 (NT01)           |     |     |      |     |      |      |      |      |        |
| 25 MITANEM                        |     |     |      |     |      |      |      |      |        |
| 26 CHRIS                          |     |     |      |     |      |      |      |      |        |
| 27 JENU                           |     |     |      |     |      |      |      |      |        |
| 28 NETWORK-Q060U2                 |     |     |      |     |      |      |      |      |        |

Review connections by protocol to speed troubleshooting

Create maps quickly to monitor and identify connection issues

## Choose Different Recipients Based On A Calendar or Timetable

Notifications can be customized or arranged based on your IT departments' availability.

- Ensure critical network notifications are sent to the correct individuals based on the time and day of the problem
- Ideal for multi-level, round-the-clock IT departments



## View a Wealth of Information with Web Reporting

Link Analyst provides easy-to-read reports from anywhere on the network, even remote locations. Reporting works identically through Link Analyst or a Web browser such as Microsoft Internet Explorer.

- **Quick Click Views**  
Sort charts by alert status, name or number of good, marginal or poor polls with a single mouse-click
- **Summary Reports**  
Review information on one or more selected time periods for an instant review of network response
- **Comparison Reports**  
Contrast various time periods for more in-depth analysis
- **Password Protection**  
Protect data from unauthorized access or limit views to one user, groups of users or individual map views

## Historical Data Analysis

Solve small problems before they become big ones by tracking historical response statistics, including degradation.

- **Review** historical routes and response times for any recorded event or timeframe
- **Log** all statistics for historical interpretation and baselining (choose days, months or years)
- **Record** mapped devices' performance
- **Identify** whether a problem is intermittent or ongoing

Your SMTP server may respond to a ping, but email may be down – Link Analyst knows the difference and lets you know visually or by email or pager instantly.

## The Link Analyst Active Notification System

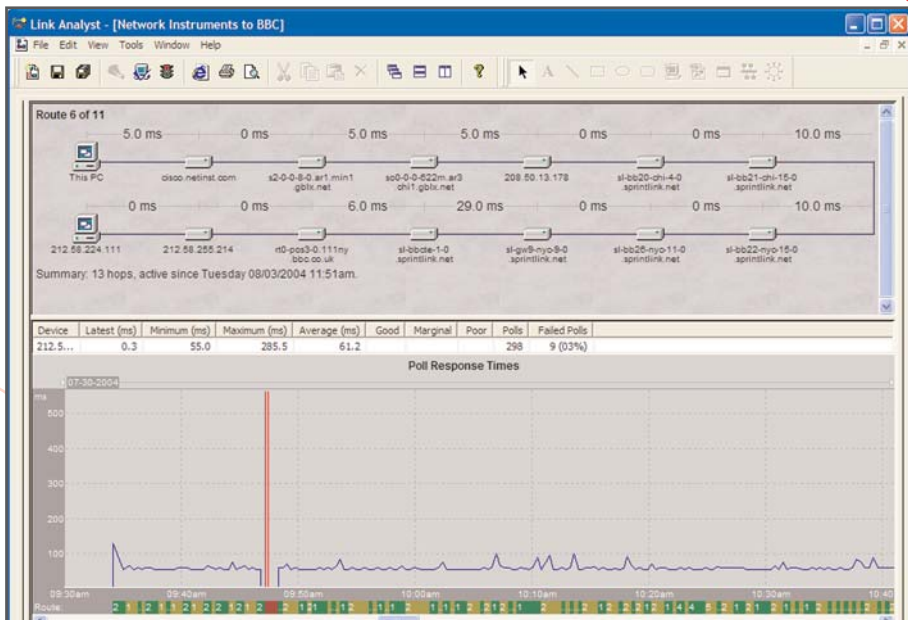
With Link Analyst you can set performance thresholds, which can trigger alarms as thresholds are crossed or nodes become unavailable.

Choose between seven different event notifications that best fit your situation. Multiple actions can be executed on one event.

**Problem:** The Email Server is responding at half the speed of the recommended threshold

**Response:** Link Analyst recognizes the issue with an alarm that triggers multiple actions





Analyze connection performance with point-to-point Route Mapping

## Link Analyst Integrates with Observer® for Complete Network Analysis

Need a solution to troubleshoot devices? Link Analyst fully integrates with the award-winning Observer console. Install Observer and Link Analyst onto the same system for comprehensive network monitoring and fault-analysis. First, select any network device, Probe or SNMP agent inside Link Analyst. Second, double-click on that device to run deeper analysis with Observer. With Link Analyst and Observer you can:

- Start Packet Captures on any selected device or device pairs
- Auto-Create Filters on any selected device or device pairs
- Review Real-Time Statistics on any selected probe or SNMP agent
- Export Link Analyst maps into Observer alias tables
- Import Observer alias tables into Link Analyst maps

All filters and captures offer a choice of either MAC (layer 2) or IP (layer 3) based monitoring. By associating a Probe with a specific map, Link Analyst can take full advantage of Observer's Distributed Network Analysis (NI-DNA™) architecture allowing instant monitoring of local or remote devices.

“ Link Analyst can also **monitor routes**. I send a lot of information between my office and a local university. The performance is usually poor, but Link Analyst clearly revealed the reasons. The messages have to cross 24 hops, traveling from Texas to Georgia then to Illinois, back to Texas, and then to the school, which is less than a 15-minute drive away. In the course of my testing, **the route changed several times, and Link Analyst told me when**. It also let me know where message slowdowns occurred. This feature lets a network manager **stay on top of critical data paths**, offering them the chance to fix the problems before the phone starts ringing. ”

- Mike Avery, InfoWorld Test Center

### About Network Instruments

Network Instruments is the industry leading developer of distributed, user-friendly, and affordable network management, analysis and troubleshooting solutions. The award-winning Observer family of products combines a comprehensive management and analysis console with high-performance remote Probes to provide integrated monitoring and management for the entire network (LAN, 802.11a/b/g, Gigabit, WAN). All Network Instruments products are designed utilizing our Distributed Network Analysis (NI-DNA) architecture. With NI-DNA, the Observer solution set simplifies network troubleshooting and management, optimizes network and application performance and scales to meet the needs of any organization. Founded in 1994, Network Instruments is headquartered in Minneapolis, Minnesota with offices in London, Paris and throughout the USA with distributors

in over 50 countries. More information about the company, products, innovation, technology, NI-DNA, becoming a partner and NI University can be found at: [www.networkinstruments.com](http://www.networkinstruments.com)

### Solution Bundles

Contact a Network Instruments representative or dealer to ask about product bundles that cover all of your network management needs.

#### Corporate Headquarters

Network Instruments, LLC  
8800 West Highway Seven  
Fourth Floor  
Minneapolis, MN 55426  
USA  
800-526-7919 toll-free  
(952) 932-9899 telephone  
(952) 932-9545 fax  
[www.networkinstruments.com](http://www.networkinstruments.com)

#### European Office

Network Instruments  
7 Old Yard  
Rectory Lane  
Brasted, Westerham  
Kent TN16 1JP  
United Kingdom  
+ 44 (0) 1959 569880 telephone  
+ 44 (0) 1959 569881 fax  
[www.networkinstruments.co.uk](http://www.networkinstruments.co.uk)